

Tests Edit Test

 Tests
  Groups
  Links


 **Primary 5 Science (Term 3) - Nan Hua (2020)** 

Add Questions

Assign

Settings

Review

 Duplicate Print Delete Assign Test**Test Introduction**[+ Add Introduction](#)**14 Questions** (12 Points)Question Bank: 9,275 Questions 

Test Questions

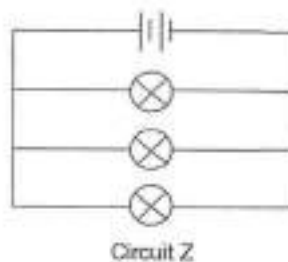
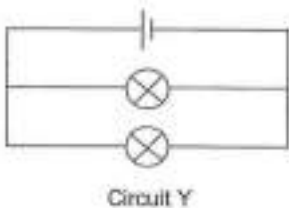
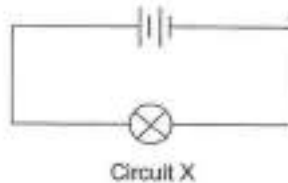
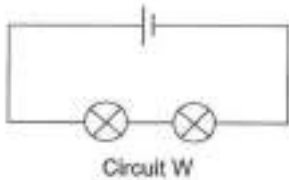
0 Test Assignments

Question 1

Primary 5 Science » Primary 5 Science (Term 3)

2 pts

Jaslyn set up four electrical circuits, W, X, Y and Z. The bulbs and batteries used were identical, and they were all in working condition.



Which circuit will the bulb(s) be the least brightly lit?

- A) Circuit W
- B) Circuit X
- C) Circuit Y
- D) Circuit Z

Question Type: Multiple Choice
Randomize Answers: No
Date Added: Mon 13th Sep 2021
Last Modified: N/A
QID#: 29,005,490

[Answers](#) | [Edit](#) | [Duplicate](#) | [Used In](#) | [Reorder](#)

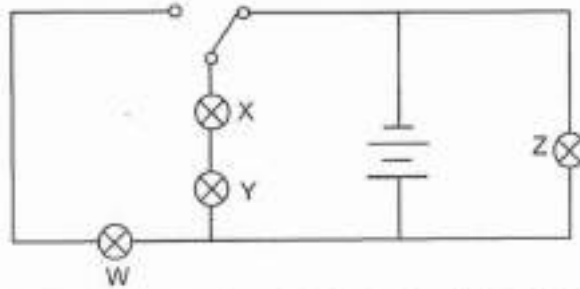
[Remove From Test](#)

Question 2

Primary 5 Science » Primary 5 Science (Term 3)

2 pts

The diagram below shows an electric circuit.



When the switch is at the current position, which bulb(s) will be the brightest?

- ✓ A) Z only
- B) X and Y only
- C) X, Y and Z only
- D) W, X, Y and Z

Question Type: Multiple Choice
Randomize Answers: No
Date Added: Mon 13th Sep 2021
Last Modified: N/A
QID#: 29,005,499

[Answers](#) | [Edit](#) | [Duplicate](#) | [Used In](#) | [Reorder](#)

[Remove From Test](#)

Question 3

Primary 5 Science » Primary 5 Science (Term 3)

2 pts

The diagram below shows two flowers from the same plant.



Pollination between these two flowers occurs when pollen grains are transferred from

- A) P to R
- B) P to S

- ✓ C) Q to R
D) Q to S

Question Type: Multiple Choice
Randomize Answers: No
Date Added: Mon 13th Sep 2021
Last Modified: N/A
QID#: 29,005,503

[Answers](#) |
 [Edit](#) |
 [Duplicate](#) |
 [Used In](#) |
 [Reorder](#)

[Remove From Test](#)

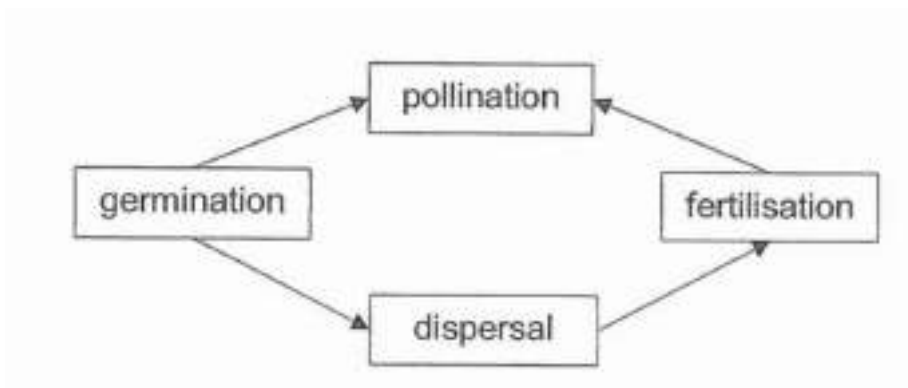
Question 4

Primary 5 Science » Primary 5 Science (Term 3)

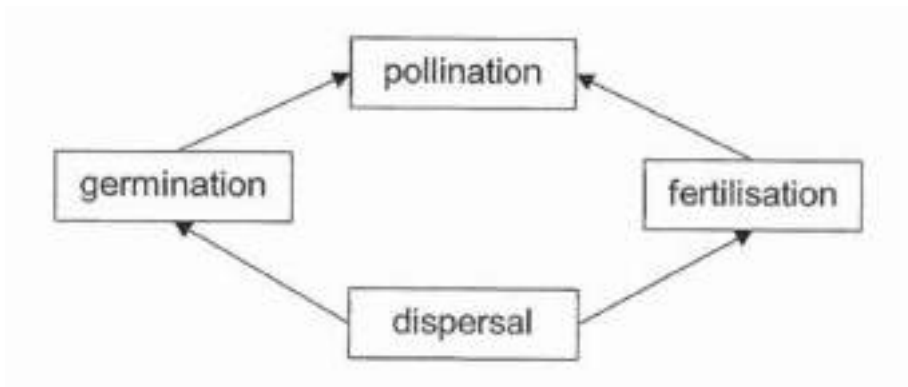
2 pts

Which one of the following shows the correct sequence in the reproduction of a flowering plant?

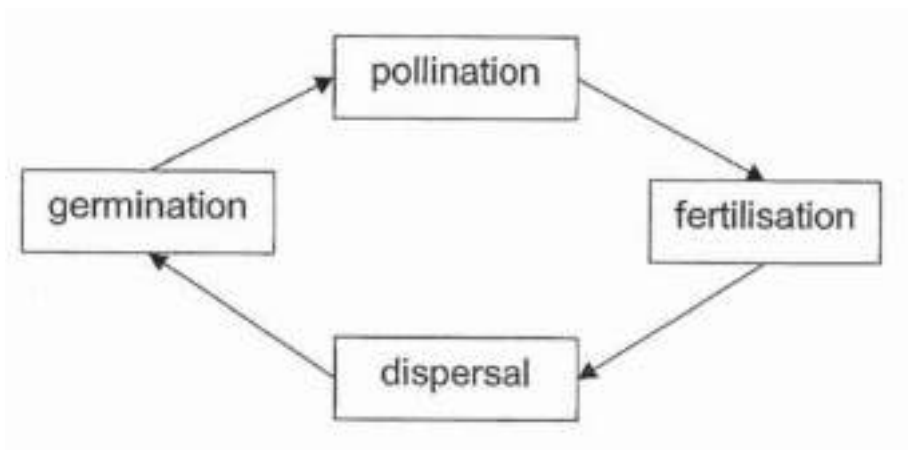
A)



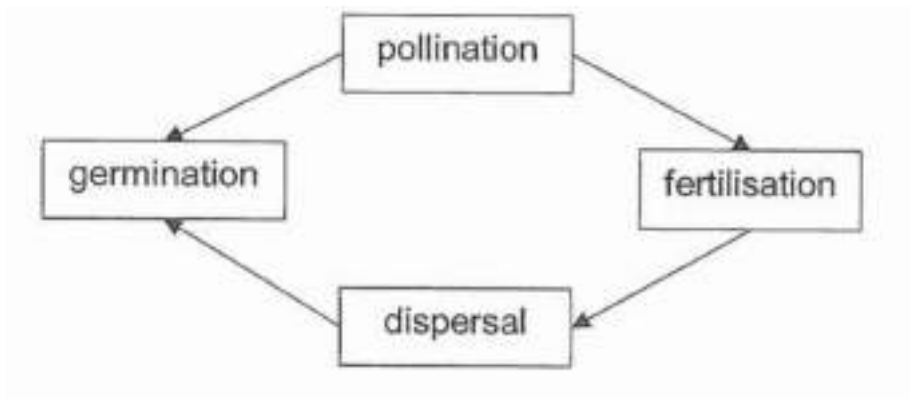
B)



✓ C)



D)



Question Type: Multiple Choice
Randomize Answers: No
Date Added: Mon 13th Sep 2021
Last Modified: N/A
QID#: 29,005,509

[Answers](#) | [Edit](#) | [Duplicate](#) | [Used In](#) | [Reorder](#)

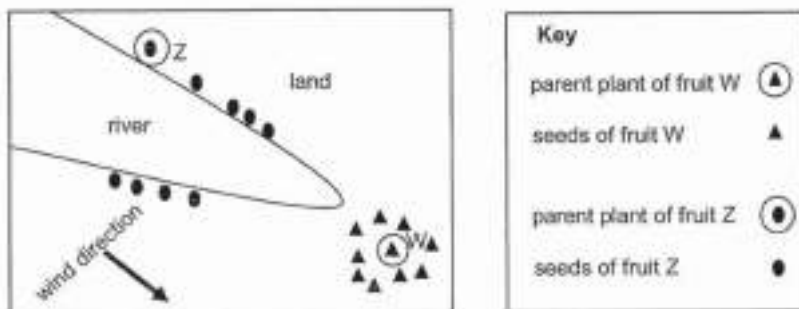
[Remove From Test](#)

Question 5

Primary 5 Science » Primary 5 Science (Term 3)

2 pts

The diagram below shows how the seeds of fruit W and Z are dispersed from their parent plants.



Which of the following shows the dispersal methods for seeds of fruit W and Z?

- A)

W	Z
animal dispersal	wind dispersal
- B)

W	Z
animal dispersal	water dispersal
- C)

W	Z
splitting action	wind dispersal
- ✓ D)

W	Z
splitting action	water dispersal

Question Type: Multiple Choice

Randomize Answers: No
 Date Added: Mon 13th Sep 2021
 Last Modified: N/A
 QID#: 29,005,557

Answers | Edit | Duplicate | Used In | Reorder

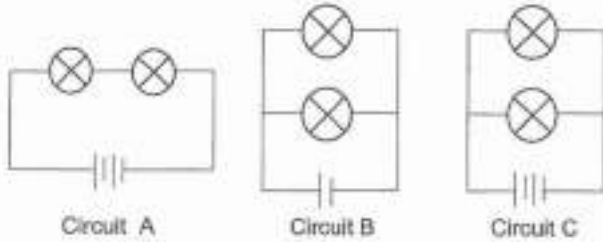
Remove From Test

Question 6

Primary 5 Science » Primary 5 Science (Term 3)

1 pt

Study the three circuit diagrams shown below. The batteries and bulbs used in the circuits are similar.



Which circuit, B or C, has bulbs that is as bright as those in circuit A?

Accepted answers:

- ✓ B
- ✓ circuit B

Question Type: Free Text
 Date Added: Mon 13th Sep 2021
 Last Modified: N/A
 QID#: 29,005,567

Answers | Edit | Duplicate | Used In | Reorder

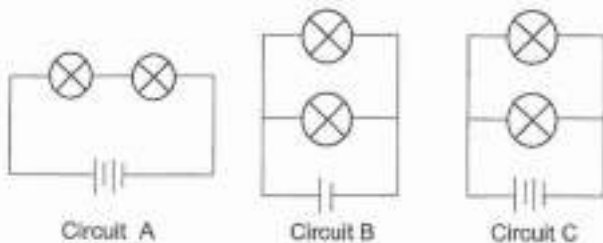
Remove From Test

Question 7

Primary 5 Science » Primary 5 Science (Term 3)

0 pts

Study the three circuit diagrams shown below. The batteries and bulbs used in the circuits are similar.



Gopal wants to find out if the arrangement of bulbs affect the brightness of the bulbs.

Which of the two circuits should he choose? Explain your answer. (1 mark)

This question is designed for extended answers that parent/ teacher will have to assign and guide child to attempt after the test has been completed.

Grading: This question type is not graded on this system and will not affect the final score as it was designed in such a way that it requires manual assistance.

Question Type: Essay
Date Added: Mon 13th Sep 2021
Last Modified: N/A
QID#: 29,005,584

Correctly answered feedback

A and C. The only changed variable is the arrangement of the light bulbs (different) but the rest of the variables - the number of bulbs and the number of batteries are kept the same/constant.

Incorrectly answered feedback

A and C. The only changed variable is the arrangement of the light bulbs (different) but the rest of the variables - the number of bulbs and the number of batteries are kept the same/constant.

[Answers](#) | [Edit](#) | [Duplicate](#) | [Used In](#) | [Reorder](#)

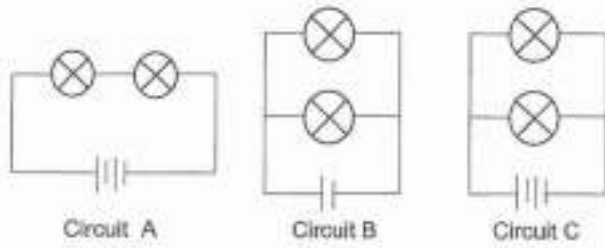
[Remove From Test](#)

Question 8

Primary 5 Science » Primary 5 Science (Term 3)

0 pts

Study the three circuit diagrams shown below. The batteries and bulbs used in the circuits are similar.

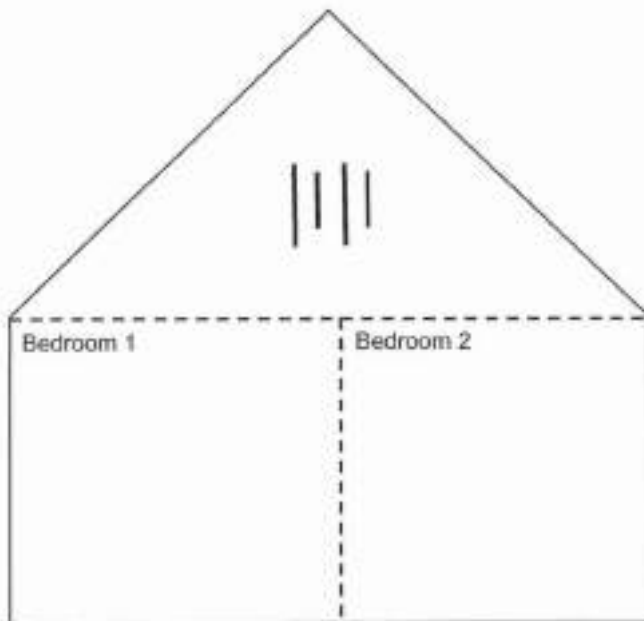


Janice has two bedrooms in her toy doll house. She wants to light up the two bedrooms in her doll house. Each bedroom needs a bulb to light up.

She has the following materials:

- wires
- two light bulbs
- two switches

Using symbols, draw a circuit diagram to show how the bulb in each room can be switched on or off one at a time without affecting the bulb in the other bedroom. Two batteries have been drawn for you below. [2]

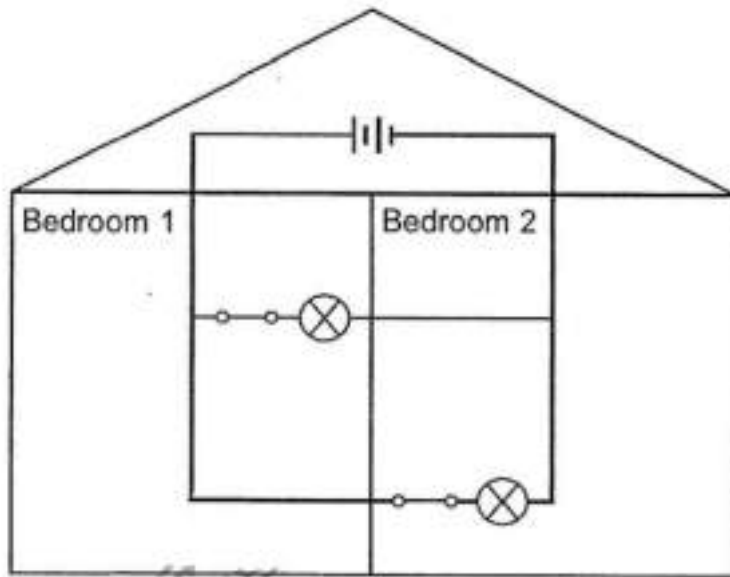


This question is designed for extended answers that parent/ teacher will have to assign and guide child to attempt after the test has been completed.

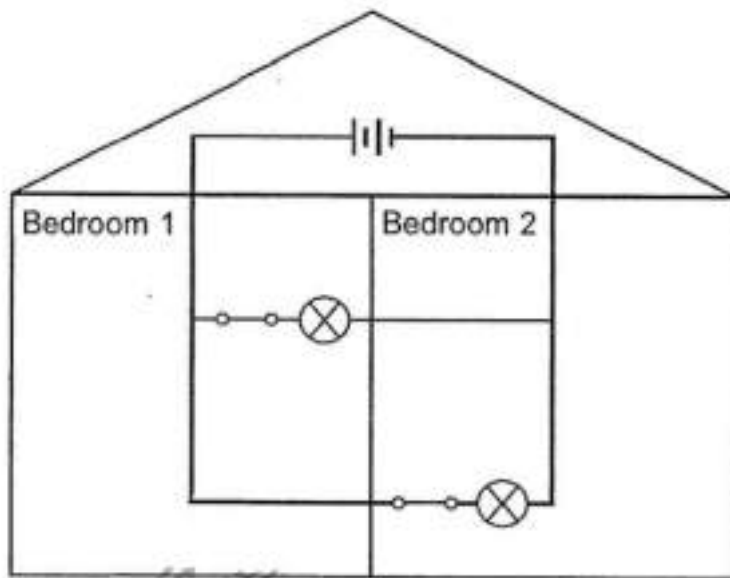
Grading: This question type is not graded on this system and will not affect the final score as it was designed in such a way that it requires manual assistance.

Question Type: Essay
Date Added: Mon 13th Sep 2021
Last Modified: N/A
QID#: 29,005,596

Correctly answered feedback



Incorrectly answered feedback



[↗ Answers](#) |
 [✎ Edit](#) |
 [📄 Duplicate](#) |
 [📌 Used In](#) |
 [⚙ Reorder](#)

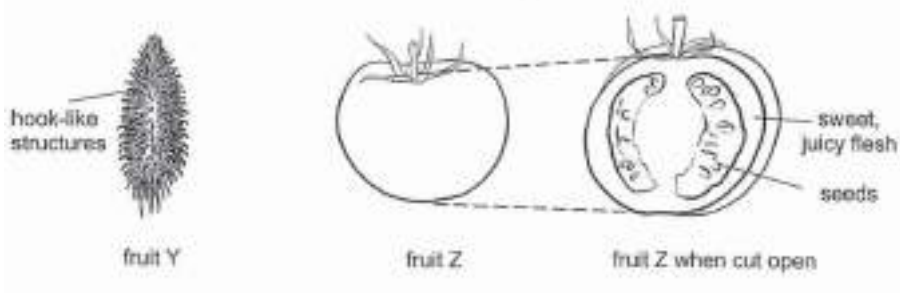
[Remove From Test](#)

Question 9

Primary 5 Science » Primary 5 Science (Term 3)

0 pts

The diagram below shows the fruits of two different plants.



State one similarity in the way the two plants disperse their seeds. (1 mark)

This question is designed for extended answers that parent/ teacher will have to assign and guide child to attempt after the test has been completed.

Grading: This question type is not graded on this system and will not affect the final score as it was designed in such a way that it requires manual assistance.

Question Type: Essay
Date Added: Mon 13th Sep 2021
Last Modified: N/A
QID#: 29,005,607

Correctly answered feedback

Both are dispersed by animals.

Incorrectly answered feedback

Both are dispersed by animals.

[Answers](#) | [Edit](#) | [Duplicate](#) | [Used In](#) | [Reorder](#)

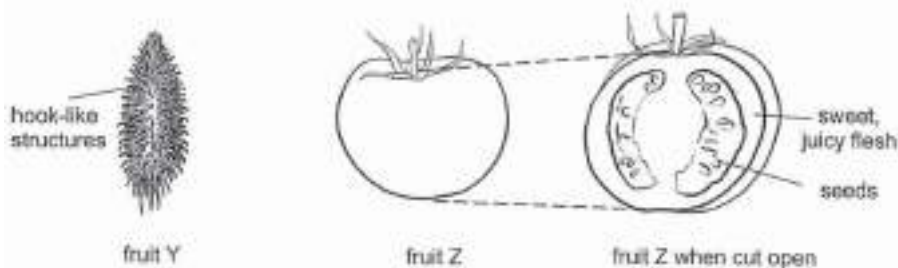
[Remove From Test](#)

Question 10

Primary 5 Science » Primary 5 Science (Term 3)

0 pts

The diagram below shows the fruits of two different plants.



Explain how the characteristic of fruit Y shown above helps in its seed dispersal. (1 mark)

This question is designed for extended answers that parent/ teacher will have to assign and guide child to attempt after the test has been completed.

Grading: This question type is not graded on this system and will not affect the final score as it was designed in such a way that it requires manual assistance.

Question Type: Essay
Date Added: Mon 13th Sep 2021
Last Modified: N/A
QID#: 29,005,619

Correctly answered feedback

It has hook-like structures that helps to attach onto body/hair of animals.

Incorrectly answered feedback

It has hook-like structures that helps to attach onto body/hair of animals.

[Answers](#) | [Edit](#) | [Duplicate](#) | [Used In](#) | [Reorder](#)

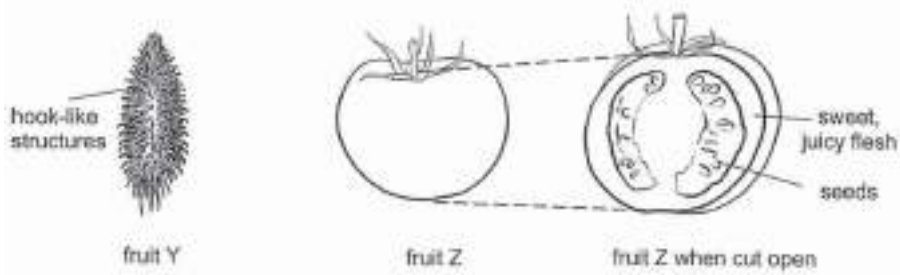
[Remove From Test](#)

Question 11

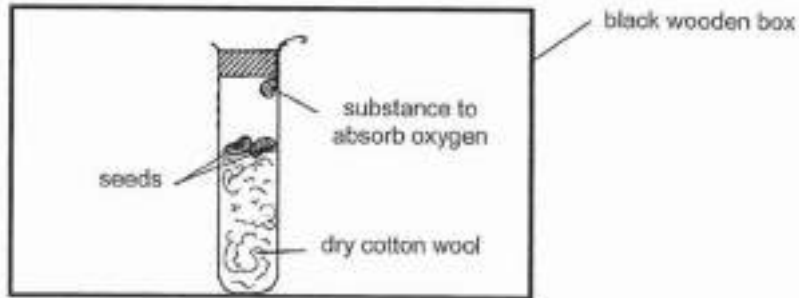
Primary 5 Science » Primary 5 Science (Term 3)

0 pts

The diagram below shows the fruits of two different plants.



Jane wanted to grow some seeds. She placed the seeds in a set-up at room temperature as shown below.



After two weeks, none of the seeds germinated. What factors in the set up does she need to change in order for the seeds to germinate? Explain your answer. [1]

This question is designed for extended answers that parent/ teacher will have to assign and guide child to attempt after the test has been completed.

Grading: This question type is not graded on this system and will not affect the final score as it was designed in such a way that it requires manual assistance.

Question Type: Essay
Date Added: Mon 13th Sep 2021
Last Modified: N/A
QID#: 29,005,631

Correctly answered feedback

She needs to remove the substance that absorb oxygen and add water to the cotton wool as both conditions are needed for seed germination.

Incorrectly answered feedback

She needs to remove the substance that absorb oxygen and add water to the cotton wool as both conditions are needed for seed germination.

[Answers](#) | [Edit](#) | [Duplicate](#) | [Used In](#) | [Reorder](#)

[Remove From Test](#)

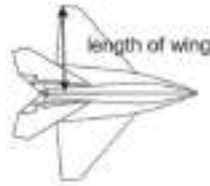
Question 12

Primary 5 Science » Primary 5 Science (Term 3)

0 pts

Jason conducted an experiment to find out how the length of the wings of the paper aeroplane affects the time taken for it to reach the ground. He dropped four paper aeroplanes with different lengths of wings from the same height. He recorded his measurements in the table below.

Paper aeroplane	Length of wing (cm)	Time taken to reach the ground (s)
A	10	14
B	7	10
C	6	8
D	4	6



Based on the results, what is the relationship between the length of the wings of a paper aeroplane and the time taken for the paper aeroplane to reach the ground? (1 mark)

This question is designed for extended answers that parent/ teacher will have to assign and guide child to attempt after the test has been completed.

Grading: This question type is not graded on this system and will not affect the final score as it was designed in such a way that it requires manual assistance.

Question Type: Essay
Date Added: Mon 13th Sep 2021
Last Modified: N/A
QID#: 29,005,651

Correctly answered feedback

As the length of the wings (of a paper aeroplane) decreases / increases, the time taken for (the paper aeroplane) to reach the ground also decreases / increases.

Incorrectly answered feedback

As the length of the wings (of a paper aeroplane) decreases / increases, the time taken for (the paper aeroplane) to reach the ground also decreases / increases.

[Answers](#) | [Edit](#) | [Duplicate](#) | [Used In](#) | [Reorder](#)

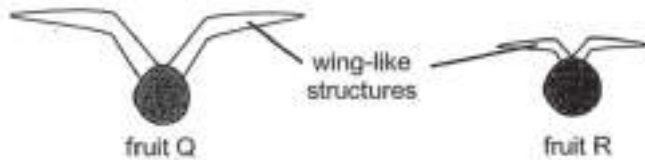
[Remove From Test](#)

Question 13

Primary 5 Science » Primary 5 Science (Term 3)

1 pt

Jason found two similar fruits from the same plant, fruit Q and fruit R, with wing-like structures of different lengths as shown below.



Based on the results above, which fruit will most likely be dispersed further away from the parent plant? Explain your answer.

Accepted answers:

- ✓ Fruit Q
- ✓ Q

Question Type: Free Text
Date Added: Mon 13th Sep 2021
Last Modified: N/A

QID#: 29,005,676

Correctly answered feedback

Fruit Q. Fruit Q's wing-like structures are longer than Fruit R's wing-like structures. This helps the seed to float in the air longer / stay in the air longer.

Incorrectly answered feedback

Fruit Q. Fruit Q's wing-like structures are longer than Fruit R's wing-like structures. This helps the seed to float in the air longer / stay in the air longer.

[Answers](#) | [Edit](#) | [Duplicate](#) | [Used In](#) | [Reorder](#)

[Remove From Test](#)

Question 14

Primary 5 Science » Primary 5 Science (Term 3)

0 pts

Jason found two similar fruits from the same plant, fruit Q and fruit R, with wing-like structures of different lengths as shown below.



Give a reason why the seeds of fruit Q and R need to be dispersed further away from the parent plant. (1 mark)

This question is designed for extended answers that parent/ teacher will have to assign and guide child to attempt after the test has been completed.

Grading: This question type is not graded on this system and will not affect the final score as it was designed in such a way that it requires manual assistance.

Question Type: Essay

Date Added: Mon 13th Sep 2021

Last Modified: N/A

QID#: 29,005,695

Correctly answered feedback

Seeds need to disperse further away from its parent plant to prevent overcrowding/reduce competition for nutrients, sunlight, water and space.

Incorrectly answered feedback

Seeds need to disperse further away from its parent plant to prevent overcrowding/reduce competition for nutrients, sunlight, water and space.

[Answers](#) | [Edit](#) | [Duplicate](#) | [Used In](#) | [Reorder](#)

[Remove From Test](#)